



**India Meteorological Department  
(Ministry of Earth Sciences)**

**NATIONAL BULLETIN NO. 5 (AS/02/2023)**

**TIME OF ISSUE: 0830 HOURS IST** **DATED: 01.10.2023**  
**FROM: INDIA METEOROLOGICAL DEPARTMENT (FAX NO. 24643965/24699216/24623220)**

**TO: CONTROL ROOM, NDM, MINISTRY OF HOME AFFAIRS (FAX.NO. 23093750)**  
**CONTROL ROOM NDMA (FAX.NO. 26701729)**  
**CABINET SECRETARIAT (FAX.NO.23012284, 23018638)**  
**PS TO HON'BLE MINISTER FOR S & T AND EARTH SCIENCES (FAX NO.23316745)**  
**SECRETARY, MOES (FAX NO. 24629777)**  
**H.Q. (INTEGRATED DEFENCE STAFF AND CDS) (FAX NO. 23005137/23005147)**  
**DIRECTOR GENERAL, DOORDARSHAN (23385843)**  
**DIRECTOR GENERAL, AIR (23421105, 23421219)**  
**PIB MOES (FAX NO. 23389042)**  
**UNI (FAX NO. 23355841)**  
**D.G. NATIONAL DISASTER RESPONSE FORCE (NDRF) (FAX NO. 26105912, 2436 3260)**  
**DIRECTOR, PUNCTUALITY, INDIAN RAILWAYS (FAX NO. 23388503)**  
**CHIEF SECRETARY, KERALA (FAX NO. 0471-2327176)**  
**ADMINISTRATOR, LAKSHADWEEP ISLANDS (FAX NO. 0413-262184)**  
**CHIEF SECRETARY, GOA (FAX NO. 0832-2415201)**  
**CHIEF SECRETARY, KARNATAKA (FAX NO. 080-22258913)**  
**CHIEF SECRETARY, MAHARASHTRA (FAX NO. 022- 22028594)**  
**CHIEF SECRETARY, GUJARAT (FAX NO. 079-23250305)**  
**CHIEF SECRETARY, DAMAN & DIU (FAX NO. 0260-2230775)**  
**CHIEF SECRETARY, DADRA & NAGAR HAVELI (FAX NO. 0260-2645466)**  
**CHIEF SECRETARY, ODISHA (FAX NO. 0674-2536660)**  
**CHIEF SECRETARY, WEST BENGAL (FAX NO. 033-22144328)**  
**CHIEF SECRETARY, CHHATTISGARH (FAX NO. 0771-2221206)**  
**CHIEF SECRETARY, JHARKHAND (FAX NO. 0651-2400255)**  
**CHIEF SECRETARY, BIHAR (FAX NO. 0612-2217085)**

**Sub: A) Depression over south Konkan**  
**B) Well marked low pressure area over southeast Jharkhand and adjoining areas of Gangetic West Bengal & north Odisha.**

**A) Depression over south Konkan**

The depression over south Konkan moved east-northeastwards with a speed of 9 kmph during past 6 hours and lay centered at 0530 hours IST of 1<sup>st</sup> October, 2023 over the same region, near latitude 17.0 °N and longitude 74.0°E, about 70 km east of Ratnagiri (Maharashtra), 130 km north-northeast of Vengrula (Maharashtra) and 170 km north-northeast of Panjim (Goa).

It is very likely to move east-northeastwards and weaken into a Well Marked Low Pressure Area during next 24 hours.

**Spatial rainfall distribution: Isolated: <25%, A few: 26-50%, Many: 51-75%, Most: 76-100%**

**Rainfall amount (mm): Heavy rain: 64.5 – 115.5, Very heavy rain: 115.6 – 204.4, Extremely heavy rain: 204.5 or more.**

## **Warnings:**

### **(i) Rainfall (warning graphics enclosed)**

#### **South Konkan:**

Light/moderate rainfall at most places with heavy to very heavy rainfall at a few places and extremely heavy rainfall at isolated places is very likely on 1<sup>st</sup> October, 2023.

#### **Goa:**

Light/moderate rainfall at most places with heavy to very heavy rainfall at isolated places is very likely on 1<sup>st</sup> October, 2023.

#### **North Konkan:**

Light/moderate rainfall at most places with heavy to very heavy rainfall at isolated places is very likely on 1<sup>st</sup> October, 2023.

#### **Costal Karnataka:**

Light/moderate rainfall at most places with heavy rainfall at isolated places on 1<sup>st</sup> October, 2023.

#### **South Madhya Maharashtra:**

Light/moderate rainfall at most places with heavy to very heavy rainfall at isolated places on 1<sup>st</sup> October, 2023.

#### **Kerala:**

Light/moderate rainfall at most places with heavy to very heavy rainfall at isolated places on 1<sup>st</sup> October, 2023.

### **(ii) Wind warning:**

**Squally wind speed reaching 45-55 kmph gusting to 65 kmph** over Eastcentral Arabian Sea along & off Maharashtra-Goa-Karnataka coasts is likely prevail during next 12 hours and gradually weaken thereafter.

### **(iii) Sea condition**

**Rough to very rough sea condition is very likely** over Eastcentral Arabian Sea along & off Maharashtra-Goa-Karnataka coasts during next 12 hours and gradually improve thereafter.

### **(iv) Fishermen Warning (warning graphics enclosed)**

Fishermen are advised not to venture into Eastcentral Arabian Sea along & off Maharashtra-Goa-Karnataka coasts on 1<sup>st</sup> October, 2023.

**Spatial rainfall distribution: Isolated: <25%, A few: 26-50%, Many: 51-75%, Most: 76-100%**

**Rainfall amount (mm): Heavy rain: 64.5 – 115.5, Very heavy rain: 115.6 – 204.4, Extremely heavy rain: 204.5 or more.**

**B) Well marked low pressure area over southeast Jharkhand and adjoining areas of Gangetic West Bengal & north Odisha**

The **Well Marked Low Pressure Area** over coastal West Bengal and adjoining areas of North coastal Odisha & Northwest Bay of Bengal now lies over southeast Jharkhand and adjoining areas of Gangetic West Bengal & north Odisha at 0530 hours IST of 1st October, 2023. It is likely to move further west-northwestwards during next 12 hours.

**Warnings:**

**(i) Rainfall (warning graphics enclosed)**

**01<sup>st</sup> October:**

Light/moderate rainfall at most places with heavy to very heavy rainfall at isolated places is very likely over North Odisha, North Chhattisgarh, Bihar, Jharkhand and Sub-Himalayan West Bengal & Sikkim; isolated heavy rainfall over Gangetic West Bengal.

**2<sup>nd</sup> October:**

Light/moderate rainfall at most places with heavy to very heavy rainfall at isolated places is likely over North Odisha, Bihar, Jharkhand, Sub-Himalayan west Bengal & Sikkim; isolated heavy rainfall over Gangetic West Bengal.

**(ii) Wind warning:**

**Squally wind speed reaching 40-50 kmph gusting to 60 kmph** is prevailing and likely over North Bay of Bengal along & off North Odisha -West Bengal and adjoining Bangladesh coasts on 1<sup>st</sup> October.

**(iii) Sea condition**

**Rough sea condition is very likely** over North Bay of Bengal along & off North Odisha - West Bengal and adjoining Bangladesh coasts on 1<sup>st</sup> October, 2023.

**(iv) Fishermen Warning (warning graphics enclosed)**

Fishermen are advised not to venture into North Bay of Bengal along & off North Odisha - West Bengal and adjoining Bangladesh coasts on 1<sup>st</sup> October, 2023.

**The system is under continuous surveillance and the next message will be issued at 1130 hours IST of today, the 1<sup>st</sup> October, 2023.**

**(Shobhit Katiyar)**  
**Scientist D, Cyclone Warning, New Delhi**

*Copy to: ACWC Mumbai/ACWC Kolkata/ ACWC Chennai/CWC Ahmedbad/ CWC Bhubaneswar/CWC Visakhapatnam/ CWC Thiruvanthapuram*

**Spatial rainfall distribution: Isolated: <25%, A few: 26-50%, Many: 51-75%, Most: 76-100%**  
**Rainfall amount (mm): Heavy rain: 64.5 – 115.5, Very heavy rain: 115.6 – 204.4, Extremely heavy rain: 204.5 or more.**



**OBSERVED AND FORECAST TRACK OF DEPRESSION OVER SOUTH KONKAN AND LOCATION OF WELL MARKED LOW PRESSURE AREA OVER SOUTHEAST JHARKHAND AND ADJOINING AREA BASED ON 0000 UTC (0530 IST) OF 01<sup>ST</sup> OCTOBERER, 2023.**



DATE/TIME IN UTC  
 IST=UTC + 0530  
 L: LOW PRESSURE AREA  
 WML: WELL MARKED LOW PRESSURE AREA  
 D: DEPRESSION (17-27 KT)  
 DD: DEEP DEPRESSION (28-33 KT)  
 CS: CYCLONIC STORM (34-47 KT)  
 SCS: SEVERE CYCLONIC STORM (48-63KT)  
 VSCS: VERY SEVERE CYCLONIC STORM (64-89 KT)  
 ESCS: EXTREMELY SEVERE CYCLONIC STORM (90-119 KT)  
 SuCS: SUPER CYCLONIC STORM (≥20 KT)

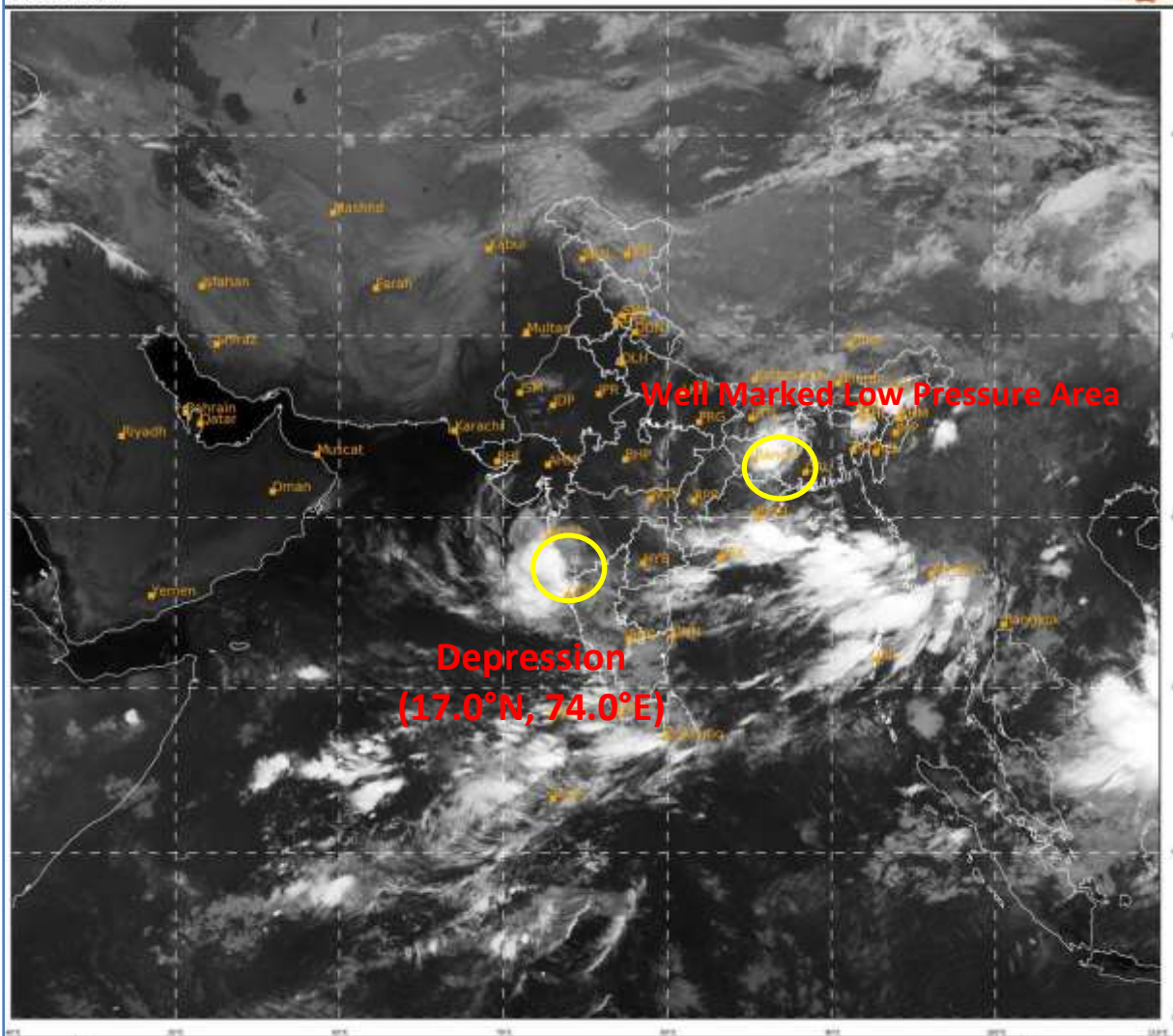
- LESS THAN 34 KT
- 34-47 KT
- ≥ 48 KT
- OBSERVED TRACK
- FORECAST TRACK
- CONE OF UNCERTAINTY

**Spatial rainfall distribution: Isolated: <25%, A few: 26-50%, Many: 51-75%, Most: 76-100%**

**Rainfall amount (mm): Heavy rain: 64.5 – 115.5, Very heavy rain: 115.6 – 204.4, Extremely heavy rain: 204.5 or more.**

SAT : INSAT-3DR IMG  
IMG\_TIR1 10.8 um  
L1C Mercator

01-10-2023/(0145 to 0212) GMT  
01-10-2023/(0715 to 0742) IST



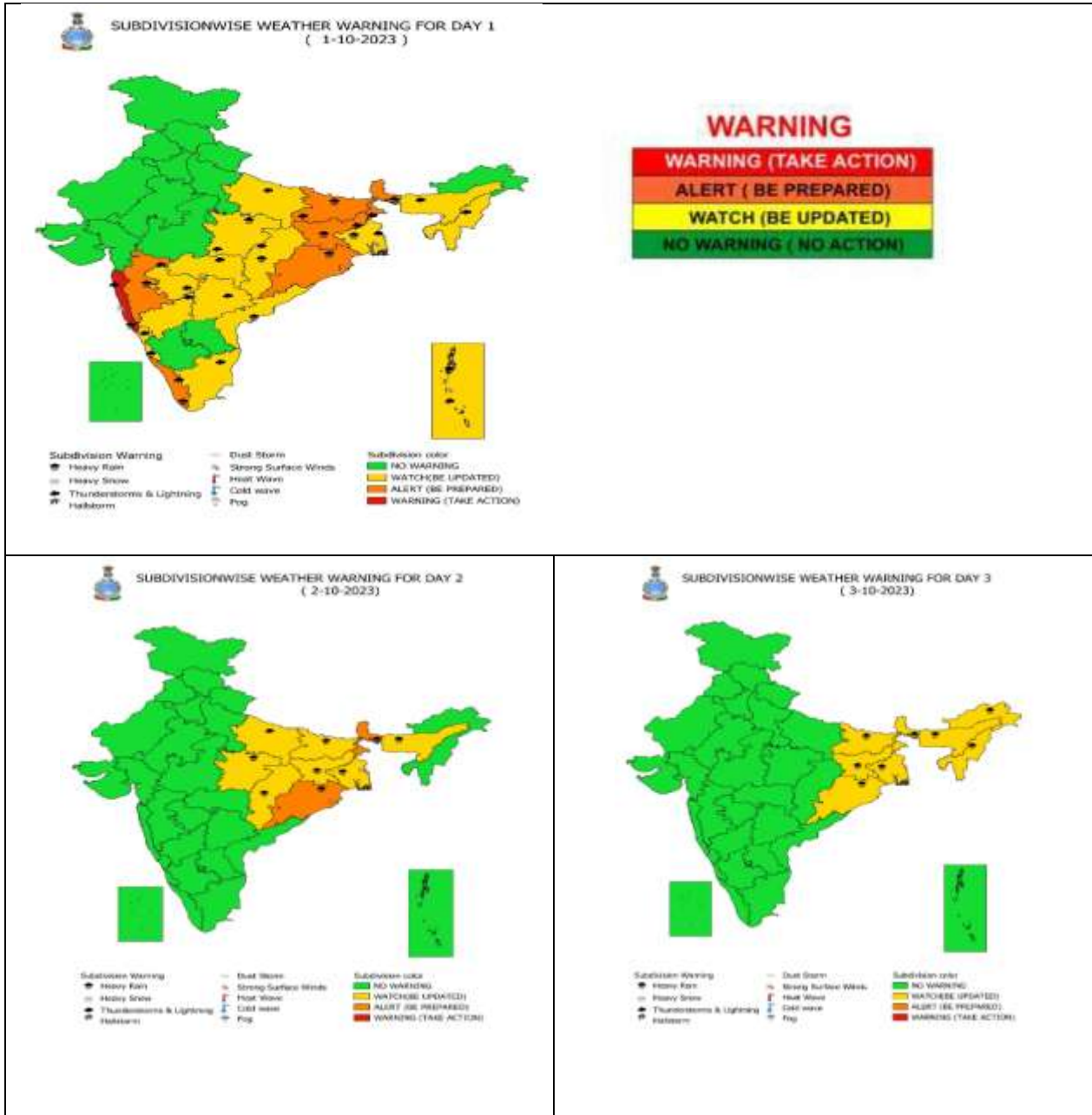
439

938

IMD, DELHI

**Spatial rainfall distribution: Isolated: <25%, A few: 26-50%, Many: 51-75%, Most: 76-100%**  
**Rainfall amount (mm): Heavy rain: 64.5 – 115.5, Very heavy rain: 115.6 – 204.4, Extremely heavy rain: 204.5 or more.**

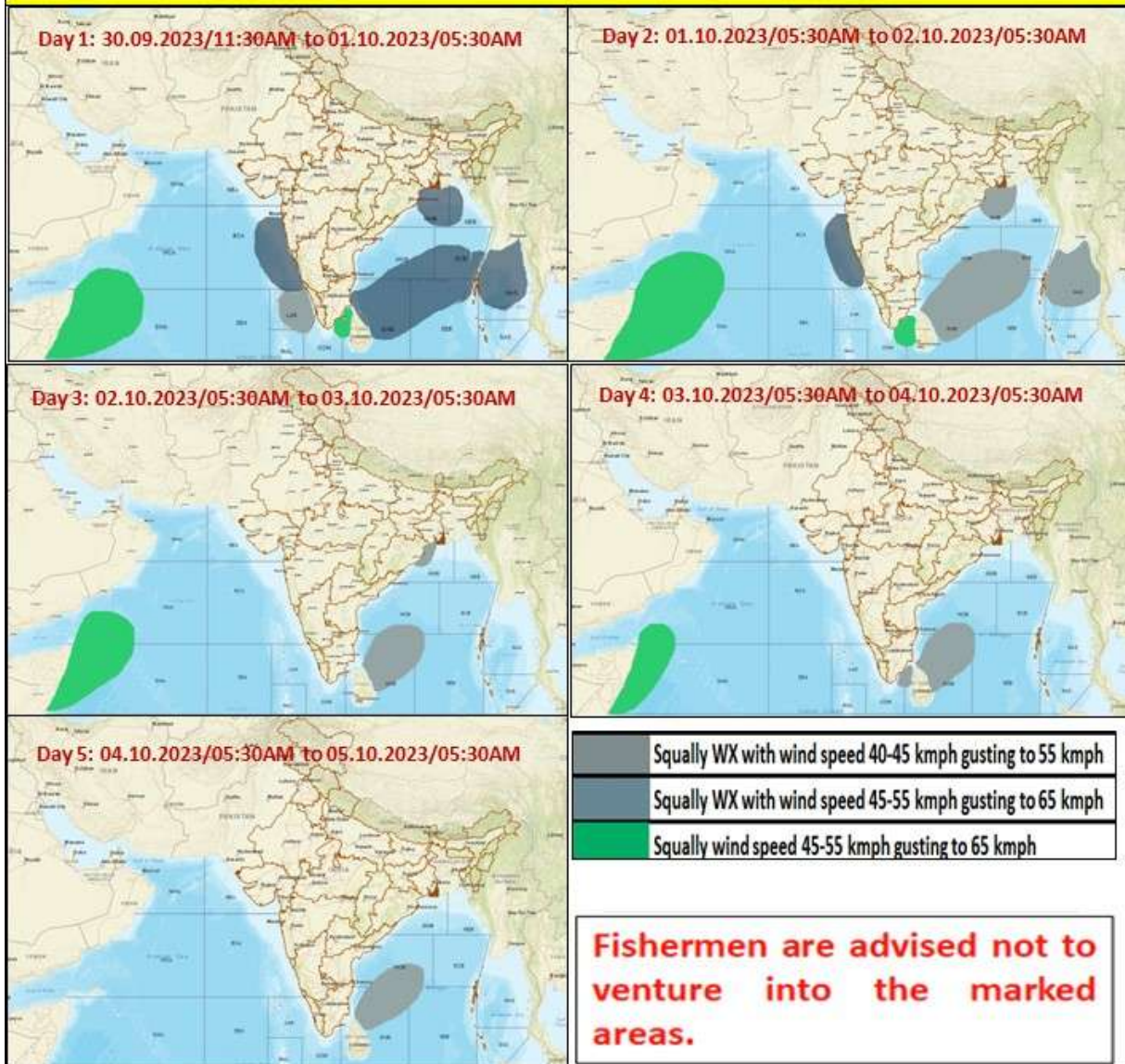




- |  |                     |  |                   |  |                     |  |                     |
|--|---------------------|--|-------------------|--|---------------------|--|---------------------|
|  | <b>Heavy Rain</b>   |  | <b>Heavy Snow</b> |  | <b>Thunderstorm</b> |  | <b>Dust Storm</b>   |
|  | <b>Strong Winds</b> |  | <b>Visibility</b> |  | <b>Cyclone</b>      |  | <b>Squall/ Hail</b> |
|  | <b>Frost</b>        |  | <b>Cold Wave</b>  |  | <b>Heat Wave</b>    |  | <b>Sea State</b>    |

**Spatial rainfall distribution: Isolated: <25%, A few: 26-50%, Many: 51-75%, Most: 76-100%**  
**Rainfall amount (mm): Heavy rain: 64.5 – 115.5, Very heavy rain: 115.6 – 204.4, Extremely heavy rain: 204.5 or more.**

## Fishermen warning graphics



**Spatial rainfall distribution: Isolated: <25%, A few: 26-50%, Many: 51-75%, Most: 76-100%**

**Rainfall amount (mm): Heavy rain: 64.5 – 115.5, Very heavy rain: 115.6 – 204.4, Extremely heavy rain: 204.5 or more.**